

OFFICE  
ALARMING

CCTV

TAILORED STORAGE  
SECURITY SOFTWARE



**SENTINEL**  
**STORAGE SECURITY**

AU: 1300 852 117 NZ: 0800 746 311

COMMUNICATION  
WITH YOUR  
MANAGEMENT  
SOFTWARE

INSTALLERS THROUGHOUT  
AUSTRALIA, NEW ZEALAND  
AND ASIA

KEYPAD ACCESS  
CONTROL

MONITORED  
CONTROL  
ROOM SERVICES

LIGHTING  
CONTROL

DOOR  
ALARMS

ELEVATOR  
CONTROL

# INTEGRATION

## PLATINUM

Winsen Platinum Property Sentinel

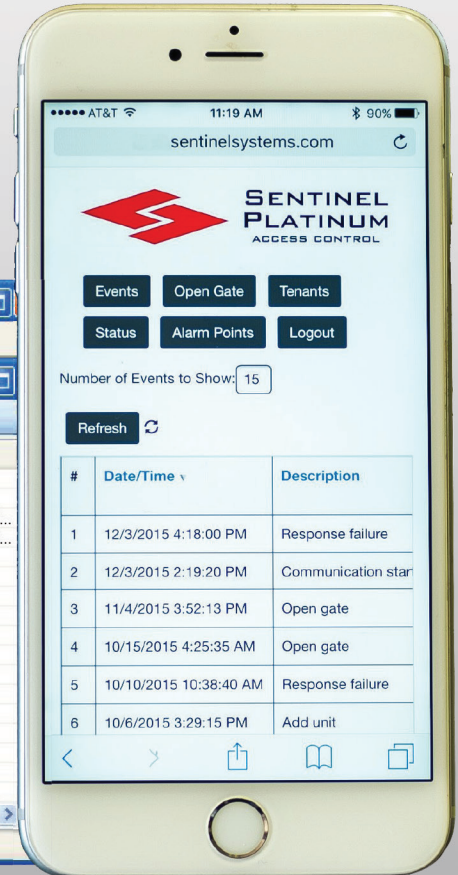
File Operations View Configure Window Help

Property Sentinel Site #1

Open Gate/Door Clear Display Redisplay Events

#	Date/Time	Description	Customer	Device
47	07/30/2008 3:01:07 PM	Bad passcode - 28760		ENTRY
48	07/30/2008 3:01:28 PM	Open gate		ENTRY
49	07/30/2008 3:31:33 PM	Alarm		DSB at Addr...
50	07/30/2008 3:31:34 PM	Close		DSB at Addr...
51	07/30/2008 4:09:04 PM	Open gate		KP0 3200i
52	07/30/2008 4:12:37 PM	Open gate		ENTRY
53	07/30/2008 4:14:45 PM	New passcode	Best Western Cambridge I...	
54	07/30/2008 4:23:39 PM	Deny - locked out	Donnelly~Mike	KP0 3200i
55	07/30/2008 4:30:53 PM	Enter	Johnson~ Mondo	
56	07/30/2008 4:31:19 PM	Enter	Johnson~ Mondo	ENTRY
57	07/30/2008 4:31:53 PM	Lighting zone off - Lighting Zone #1		
58	07/30/2008 4:32:54 PM	Exit	Johnson~ Mondo	KP0 3200i
59	07/30/2008 4:42:17 PM	New passcode	Rode~Bill	
60	07/30/2008 4:42:36 PM	Invalid time	Rode~Bill	KP0 3200i
61	07/30/2008 4:42:40 PM	Invalid time	Rode~Bill	ENTRY
62	07/30/2008 4:43:08 PM	New timezone	Rode~Bill	
63	07/30/2008 9:00:00 PM	Off-site	Rode~Bill	

VistaPC01\SQLEXPRESS,PlatinumDB Neighborhood Storage On 9th Joe Owner



## ACCESS CONTROL

- Log into the property's access control system from any computer. Monitor property activity from multiple locations through multiple web-browsers on a single work station
- Now all network workstations can access and change information in the property's database
- Multiple communication ports are supported for additional access control systems
- Alarm and monitor building and hallway entrances
- Utilizing SQL server as the database engine
- The NEW Platinum access control runs as a Windows service, meaning no network log in is required
- Activity Alerts via text message or email
- Seamless built in integration from the ground up
- Designed for complete site operation

"Superior Integration with Platinum Property Manager"





# ACCESS CONTROL & KEYPADS

## 3200i INTEGRATED KEYPAD...

THE ONLY KEYPAD OF ITS KIND WITH SMART KEYPAD TECHNOLOGY



- Now MORE property management integration is possible using our latest access system
- NEW 8 line graphical display
- Customize keypad messages on a tenant-by-tenant basis
- Unique keypad responses on entrance & exit keypads
- Red backlit metal keys
- Pinhole camera & intercom included
- Configurable gate access hours, which include special weekend & holiday hours
- Real-time/on-screen gate activity display
- Extensive gate activity reporting
- Configurable access levels for restricting access to unauthorized areas & buildings
- Multiple passcodes per unit

# ACCESS CONTROL & KEYPADS

## SMART KEYPAD TECHNOLOGY

ALLOWS ACCESS CONTROL WHILE THE COMPUTER IS OFF



*daVinci*

**...NEVER WORRY ABOUT  
PC FAILURES AGAIN!**

The latest *daVinci* model  
keypads are designed to  
retain all valid tenant codes  
and operate with your PC  
on or offline.

- Backlit Metal Keys
- Bright, Well-Lit Display
- Weather Resistant Enclosure
- Key Lock Access for Easy Accessibility
- Optional Intercom & Pinhole Camera
- Supports multiple languages

"We don't just develop software & security solutions, we support them."



# ACCESS CONTROL & KEYPADS

## 3200 KEYPAD

### Some new included features:

- New sleek, slim design
- Red backlit, metal keys
- LCD display
- Intercom call station
- Color pinhole camera
- One piece hinged and locking faceplate for easy access



## 3200ir KEYPAD

Use your Smart Phone to access the facility, pay your bill, view your account history and much more

# DOOR ALARMS

## DOOR ALARMS



Studies show that most thefts at a self-storage facility are committed by renters. Having the ability to monitor each unit on an individual basis gives you the power to protect your tenants and their valuables. This will enable you to rent these units for more per month with a 5-12% increase in income. We offer various methods of securing each individual door from hard-wired systems. Keep in mind that the very best time for installation is during the facilities' construction.

- Automatic arm/rearm with WinSen Sentinel Access and Platinum Access
- Over 2,000 point monitoring
- Multiple unit arm/disarm with single code
- Multiple output relays for triggering various devices when alarms occur

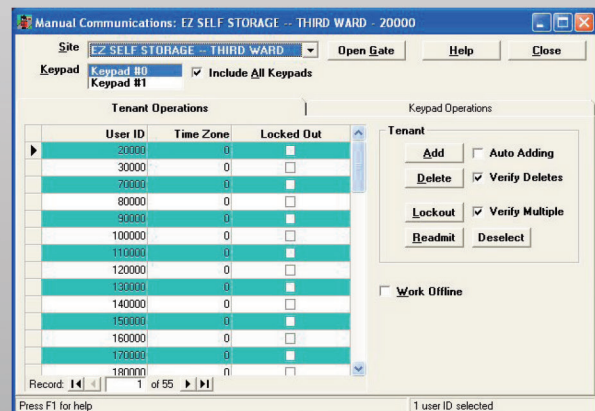
## GATE OPERATORS

Sentinel can also supply your site with a gate operator.

## STAND ALONE REMOTE ACCESS

Now, manage unattended sites from your home office over a telephone line or internet connection.

- Easy to operate Access Control for peace of mind
- Convenient, time saving management of all your "satellite" locations from one leasing office
- Four, seven day time zones
- Easily expandable up to 16 keypads per site



- Manage both local and any remote locations abroad using a single PC
- Real-time activity is reported by each location on the Sentinel Access Control activity screen
- Apply this new concept at any access point on your existing property or in your next phase
- Communicate with your gate using wireless modems or the internet

**WinSen**

## REMOTE COMMUNICATIONS

For your Sentinel Access and Alarm system





# UNATTENDED SITE SECURITY

## ELEVATOR CONTROL & LIGHTING CONTROL

Relay #	Floor
Relay #1	1
Relay #2	2
Relay #3	3
Relay #4	4
Relay #5	5
Relay #6	6
Relay #7	7
Relay #8	8

Sentinel Systems' Elevator Control is designed specifically to prevent unnecessary travel in and around your property. This permits your customers limited access to only the floors they have business on – while offering your customers the highest level of security.

Our lighting control feature allows lights, or any relay controlled electrical device to be turned on and off according to tenant activity and/or time of day.

## PROPERTY MANAGER

- Friendly, easy to read screen layouts
- Custom letters using Microsoft Word
- Automated letter and notice printing
- Extensive report & graph menu
- Flexible late fee scheduling
- Quickbooks interface
- Superior integration with Sentinel Access Systems
- Mobile Storage Tracking module
- ACH & Credit Card Processing
- Prospective Tenant Management
- Texting notices & letters



Your **PATH** to a  
Truly **SECURE** Facility

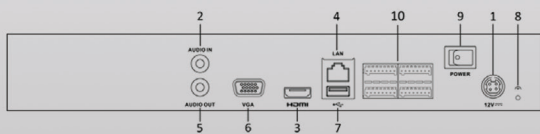


# HIKVISION

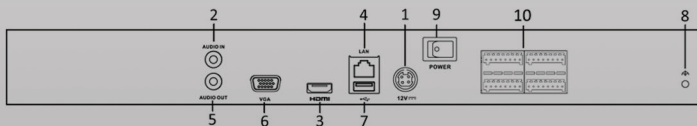
## RECORDERS & CCTV CAMERAS

### Key features

- Third-party network cameras supported
- Up to 5 Megapixels resolution recording
- HDMI and VGA output at up to 1920×1080P resolution
- 4/8/16-ch network cameras can be connected with 25M/50M/100M incoming bandwidth
- Up to 2 SATA interfaces
- Support network detection, including network delay, packet loss, etc.)



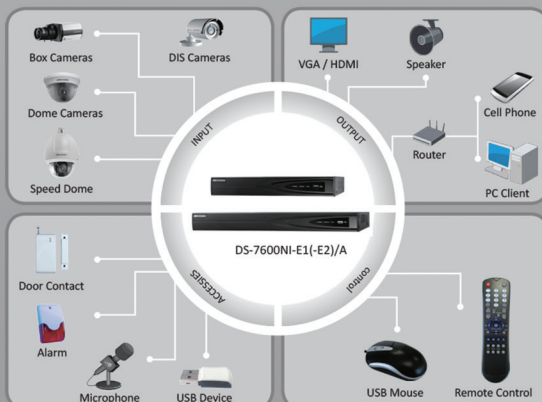
DS-7600NI-E1/A



DS-7600NI-E2/A



- |                          |                  |
|--------------------------|------------------|
| 1. Power Supply          | 6. VGA Interface |
| 2. Audio In              | 7. USB Interface |
| 3. HDMI Interface        | 8. Ground        |
| 4. LAN Network Interface | 9. Power Switch  |
| 5. Audio Out             | 10. Rear Panel   |



### 2MP Full HD IR Bullet Network Camera

#### Key features

- Up to 1920 x 1080 high resolution
- Full HD 1080p video
- Smart Codec
- DWDR, 3D DNR
- Triple streams
- On-board storage, up to 64GB
- Smart Focus: Motorized VF lens (-Z)
- Smart VQD
- Smart Facial Detection
- Intrusion Detection
- Built-in heater
- Defog
- EIS (Electronic Image Stabilization)



Smart Audio Detection



Smart Focus



Smart Codec



Smart Face Detection



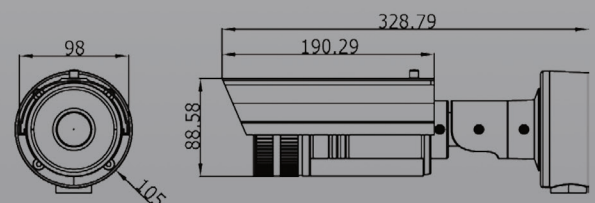
Smart IR



Intrusion Detection



Smart VQD



Dimension (unit: mm)



# OFFICE ALARMS & ELECTRIC FENCES



## BOSCH

### Solution 6000 Access Control & Alarm Systems

With up to 144 zones, 16 access doors or readers & 256 users, Solution 6000 is your security solution. The Solution 6000 Access Control & Security System that has the alarm features you've always loved, with the access control capabilities you've always needed.

#### Features:

- 16 access doors or LAN readers
- Up to 144 zones & 256 users
- Full text menu display for programming & user control
- Proximity, biometric and external readers, with external keypad options
- Supported communication formats include Conetix IP, GSM, SMS, Email, CID, GPRS, CSV IP, SIA 3+ Text and Voice
- SMS over Bosch GSM & SMS panel control ie. arm, disarm
- Up to 37 outputs available with one on-board dedicated relay programmed for roller doors

**NEMTEK**  
Electric Fencing Products

### DETECT, DETER AND DELAY

When a physical barrier, such as a wall or a fence, is combined with an electric fence it will deter attempts to infiltrate the protected perimeter. The electric fence delivers a high voltage shock that is non-lethal to the potential intruder. The Nemtek electric fence energizer has a detecting feature, which produces an alarm when the protected perimeter has been breached or tampered with. By using an electric fence, the attempted break-in of the protected area can be delayed giving additional time for a reaction team to respond to the breach.



**HIKVISION**

**BOSCH**

# THINGS TO CONSIDER WHEN CHOOSING A SELF-STORAGE SECURITY SOFTWARE & HARDWARE SOLUTION



1. Can one company supply, install and manage your Access Control, unit alarming, lighting control, CCTV, office alarm and electric fence?
2. Are the company's products specific to a self-storage environment?
3. Does the Access Control and Unit Alarming Software interface with management software?
4. Are all the products market leading?
5. Can the keypads continue to work when communications are offline, allowing your tenants uninterrupted access?
6. Do the keypads keep time and migrate information back to the software when it comes back online?
7. Are the installers that are authorised to install the product hand selected or can anyone install the product?
8. Are installers available in every state and territory of Australia, NZ (north and south islands), Singapore and Hong Kong?
9. Is every job inspected by a Quality Assurance Representative?
10. Is the after-sales support centre manned every day?
11. Is the software and hardware the best of the best?
12. Are mobile phone and tablet applications standard?
13. Can the software give alarm notifications to the manager and unit holder via SMS, email or both? Can the software notify customers via SMS when their entry code is used?
14. Is the lighting control software standard?
15. Can the provider introduce you to self-storage builders, managers, brands and management software companies?
16. Has the provider got a great track record with 1000s of installations worldwide? We have installations with hundreds of self-storage operators throughout Australia, NZ and Asia including Fort Knox, Kennard's Self Storage, Storage King, StoreLocal, Frys Storage, Red Box (HK) and the list goes on.
17. One telephone number to assist

**1300852117 (Australia)**

**NZ +61 3 99882035**





# **SENTINEL**

**STORAGE SECURITY**

**AU:1300 852 117 NZ:0800 746 311**

**Jason Keane**

**+61-3-99882035**

[jason@storagesecurity.com.au](mailto:jason@storagesecurity.com.au)

[www.storagesecurity.com.au](http://www.storagesecurity.com.au)

[www.storagesecurity.co.nz](http://www.storagesecurity.co.nz)

[www.storagesecurityasia.com](http://www.storagesecurityasia.com)



**HIKVISION**

**BOSCH**